

Là, sui monti del l'est

Giacomo Puccini
Trans. R. H. Elkin

Ragazzi (Children)



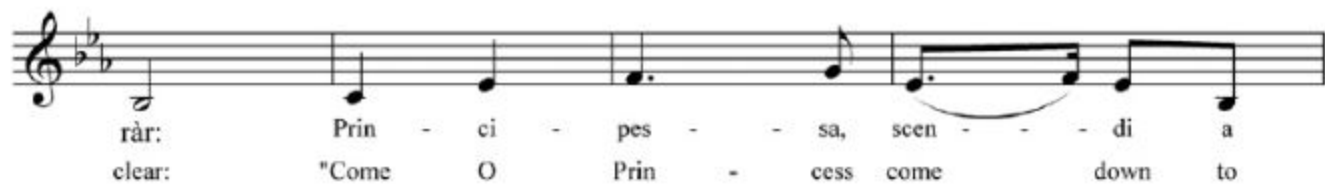
Là, su - i mon - ti del l'est la ci -
Ov - er the hills, far a - way, doth the



co - gna can - tò, - - - Ma l'a - pril non -
stork sing her lay; But no spring has



ri fio - - ri, - - - ma la ne - ve non sge -
flow - er'd yet, and the snow lies cold and



Puccini's (mostly) Mixolydian Bass Line for

Là, sui monti del l'est

(Select most convenient key for your ensemble. The original is in E flat.)

Là, sui monti del l'est (simplified bass line)

Play 5 times

Giacomo Puccini



Play 3 times



Là, sui monti del l'est
(simplified bass line, transposed to F+)

Giacomo Puccini

Play 5 times



Play 3 times

